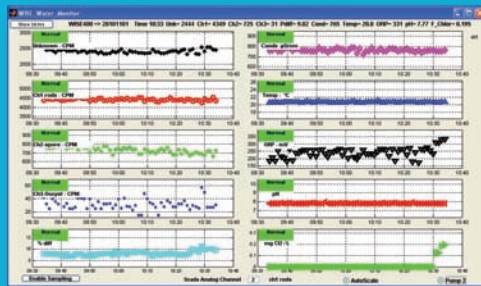


# WISE®

Bio-Chem



ECSI.INTERNATIONAL



## BENEFITS AND FEATURES:

- Continuous, online, real-time detection and classification of potentially harmful biological and chemical contaminants in water.
- 'Detect to Warn' system detects early signs of water quality deterioration allowing for quick remedial action.
- Complimentary to existing water instruments and quality processes utilizing SCADA and other data systems.
- Total system flow up to 120 ml/min (360 liters per day) with an inspection rate of approximately 1 ml per minute (1.4 liters per day).
- Low maintenance with automatic cleaning. As well as low cost of ownership requiring no consumables or reagents or detection.
- Remotely accessible for viewing or operation worldwide via the internet.
- Provides 24/7, minute to minute data on baseline water quality and a constant measurement of system bioburden.

## WATER INFRASTRUCTURE SENSING EQUIPMENT:

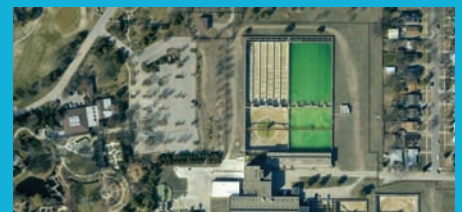
ECSI International manufactures the Water Infrastructure Sensing Equipment (WISE®)

Remote Data Processing Unit (RDPU) for data acquisition, on-site analysis, communications, and information management. The WISE® is integrated with sensors, analyzers, and communications to create Water Quality Remote Monitoring Systems. These systems provide detection of chemical, biological, and radiological (CBR) contamination in drinking water and report detected problems instantly.

The WISE® systems can be configured to monitor water quality across a broad spectrum of sources and uses, and the systems have the greatest flexibility and information management capability available. WISE® Systems increase efficiency by saving man-hours, laboratory costs, and potentially, power and chemical costs through data feedback and process optimization by giving real time, continuous access to water quality information.

The WISE® system integrates standard industry sensors (temperature, conductivity, ORP/Redox, pH) into an advanced Bio-Chemical sensor to provide real-time online monitoring for not only general water quality parameters but also rod-shaped bacteria, bacterial endospores, and protozoan cysts.

The flexibility of this design allows one system to remotely monitor drinking water or wastewater efficiently. This integrated hardware/software system is easily integrated with existing SCADA systems.



ecsi@ecsiinternational.com

790 Bloomfield Avenue  
Building C-1  
Clifton, NJ 07012

tel: 973.574.8555  
fax: 973.574.8562

www.ecsiinternational.com



ECSI.INTERNATIONAL

# WiSE<sup>®</sup>

Bio-Chem

## Water Infrastructure Sensing Equipment



### APPLICATIONS:

#### Water Security

- Monitors water distribution systems for contamination.
- Provides 24/7 drinking water surveillance for high-profile facility protection.
- 'Early Warning System' capabilities via email alerts and online, real-time vigilance.

#### Process Control

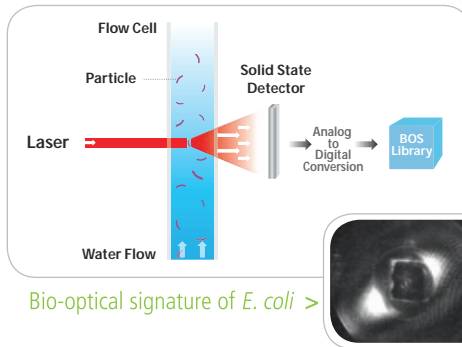
- Collects real-time data providing baseline water quality leaves across treatment protocols.
- Detects bio-film shedding and unwanted microorganisms in water systems.
- Monitors/measures micro-biological burden in pure water before use in manufacturing processes.

#### Water Quality

- Provides early contamination warning for drinking water after treatment and in distribution.
- Monitors background flora (heterotrophes) for trends and changes that indicate water quality deterioration.
- Measures integrity and performance post-filtration in water systems.



### SENSORS:



Biological Sensor



Conductivity



ORP/Redox



Temperature



pH

### SPECIFICATIONS:

Communications Interface	TCP/IP (Standard) Wi-Fi (Standard) USB 3G Modem (Customer Supplied) Internal Netbook Computer (Standard) 1 Channel SCADA (4-20mA) Standard RS-232 ASCII Data Output (Optional)
Power Requirements	Voltage: 115/230 VAC* Current Rating: 5/3 A Frequency: 60/50 Hz <i>*Must Specify Voltage Upon Order</i>
Computer Specifications	Intel Processor, 1GB Ram Hard Drive XP Pro Operating System
Temperature Range	80° - 85° F (3° - 29° C) Ambient Temperature
Unit Dimensions	33.10" x 23" x 35"
Unit Weight	155 lbs (70.31 kg)
Enclosure Material	Steel

©2010 ECSI International, Inc. All rights reserved. Specifications and prices are subject to change without notice. WiSE is a registered trademark of ECSI. Multiple patents pending. Effective 11/12/10.

ecsi@ecsiinternational.com

790 Bloomfield Avenue  
Building C-1  
Clifton, NJ 07012

tel: 973.574.8555  
fax: 973.574.8562

www.ecsiinternational.com